


## How to use The Saint? (Ver. 1.05)

The Windows System will find new hardware device and need device driver after your plug in The Saint. You can select TSUsbKey.inf and TSUsbkey.sys in your CD-ROM and install it.



1. Check device manager if the Saint USB Key appears normally.

2. Open the CD-ROM directory and double click the  setup.exe icon. Then follow the on-screen instructions to complete installation. The application will ask you to restart computer before setup is completed.

3. After you have installed the device driver **Correctly** it will show this icon when you plug in The Saint at the first time.



4. Type the Key ID serial number where was labeled on the CD-ROM and the password (you name it). **It is very important** that you keep the Key ID and Password safely. You might duplicate the same new Key if the old Key was lost. This new Key can restore your previous image file to VHDD like you made before.

5. Plug in The Saint into the USB port and click the appropriate icon





This menu will appear on screen when you click The Saint icon. This menu allows you to add, delete, and modify hidden partitions on your local hard drive. Even with the PC Lock & Web Lock Option.

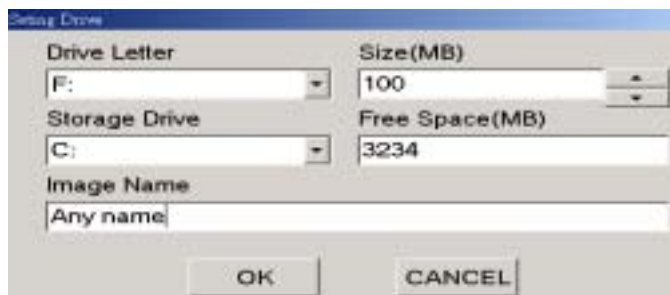
To add a new hidden partition:

1) Insert the Saint into your USB port



2) Click Add icon in the menu

3) Then select the options



Drive Letter:

You can choose drive letter for your partition.

Size:

You can select size of the partition.

Storage Drive:

This refers to the drive where the partition is hidden. The drive selected should have at least as much free space as appropriated in size.

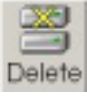
Image Name:

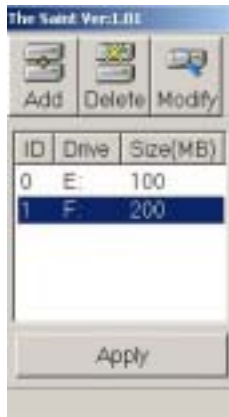
Type the image name for the virtual partition to check if there are same image name existed. This file (\*\*\*.img) will be stored in **C:\ProgramFiles\The Saint** or **D:\ProgramFiles\The Saint** depending on which Storage Drive is selected.

4) After you have selected drive letter, size, storage drive and image name click ok to add drive.

To delete a previously created hidden partition:

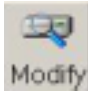
1) Insert the Saint into your USB port.

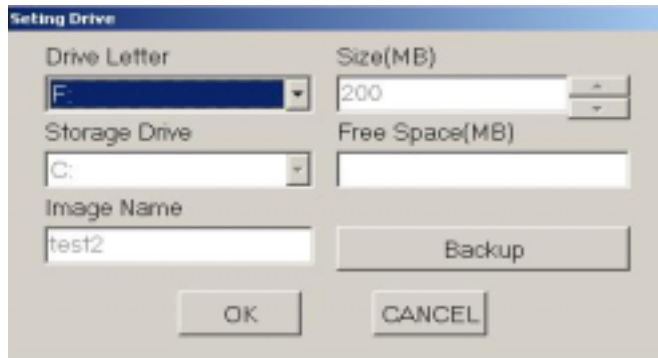
2) Choose the drive that you want to delete and click Delete icon  in the menu and Apply.



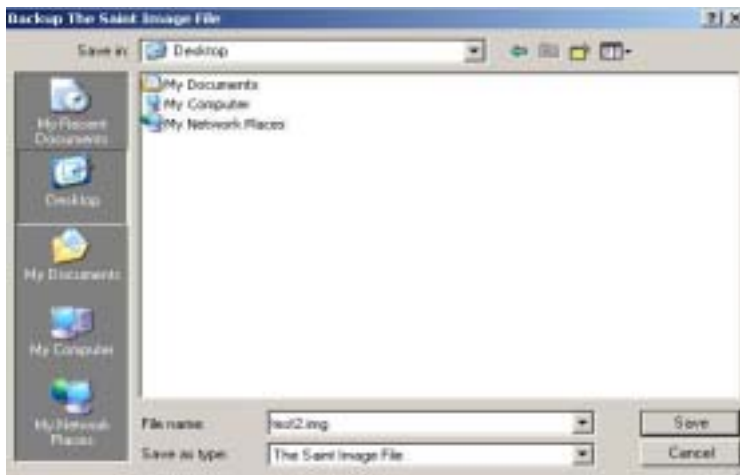
To backup image file:

1) Select drive number that you want to backup.

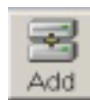
2) Click Modify icon  and check Backup.



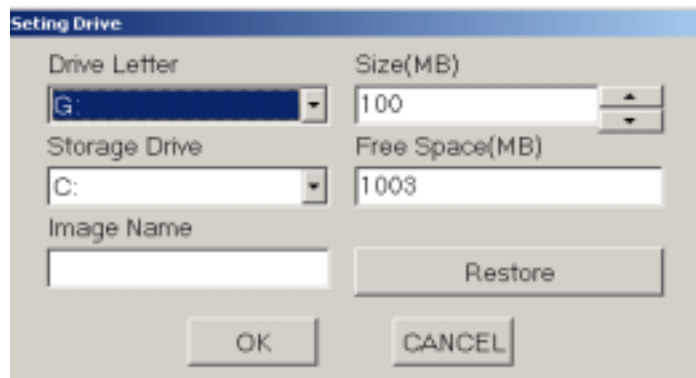
3) You can save the image file to a specific folder. Even you can burn it to a CD-ROM later.



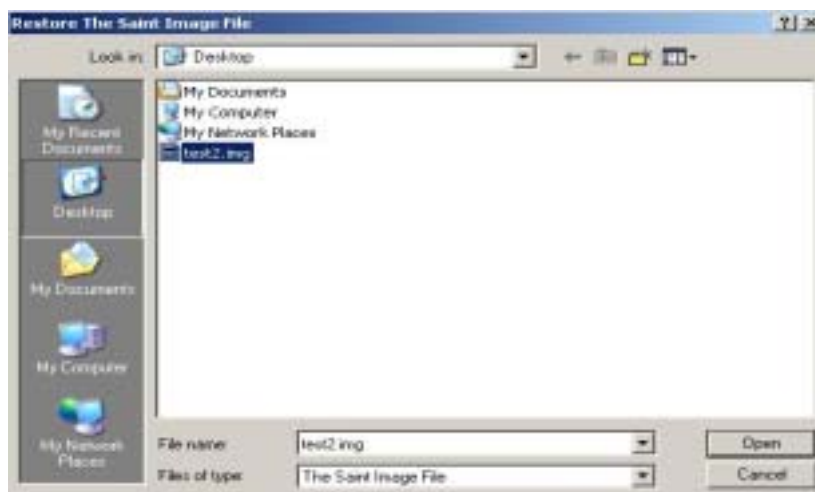
To restore a virtual hard disk drive from image file:



- 1) Select Add icon first and Restore. Do not select the drive letter because you are going to make another drive from backup image file.




- 2) Select an image file to restore it. You can choose Drive Letter and Storage Device for this Virtual Hard Disk Drive.



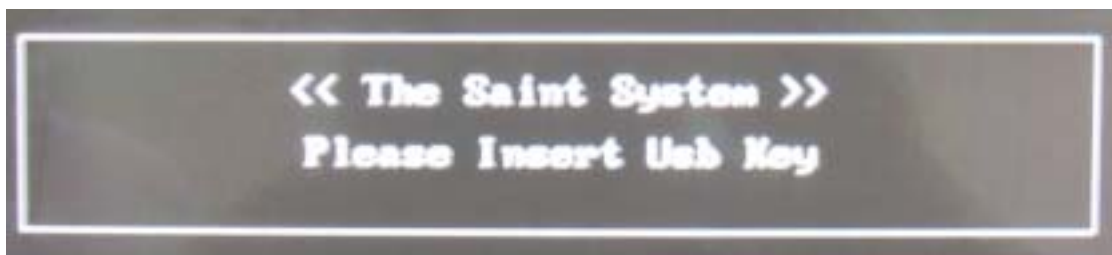
## To Lock PC



- 1) Select Option icon  than you can check Lock PC box to enable PC Lock every time when you start computer.




- 2) The screen will show << The Saint System >> Please Insert Usb Key like



- 3) We **don't recommend that users to use this function** when many people using the same one computer. The computer may be confused by different USB key and cause the system boot up failure.
- 4) PC Lock function supports most of the chipsets (PCI to USB Universal Host Controller) in the market. But some of the controllers will cause the system boot up failure. **Users must be very careful using this function.**

## To Lock Web



- 1) Select Option icon  than you can check Web Lock box to stop Internet Explore application without the Saint key.



- 2) When you run Microsoft IE next time without the Saint Key in USB port. This will promote on the screen



- 1. Each USB Key can add four partitions at most.
- 2. The image files will not be deleted without the key in USB port.
- 3. Backup your image file to a specific folder first. And than you can restore it in your computer if you delete your partition accidentally.